

D40-XXX100/140B

Door type: *door panel width mm (X), max opening mm*

D40-XXX100B: 400 - 1000 mm, 291 - 891 mm

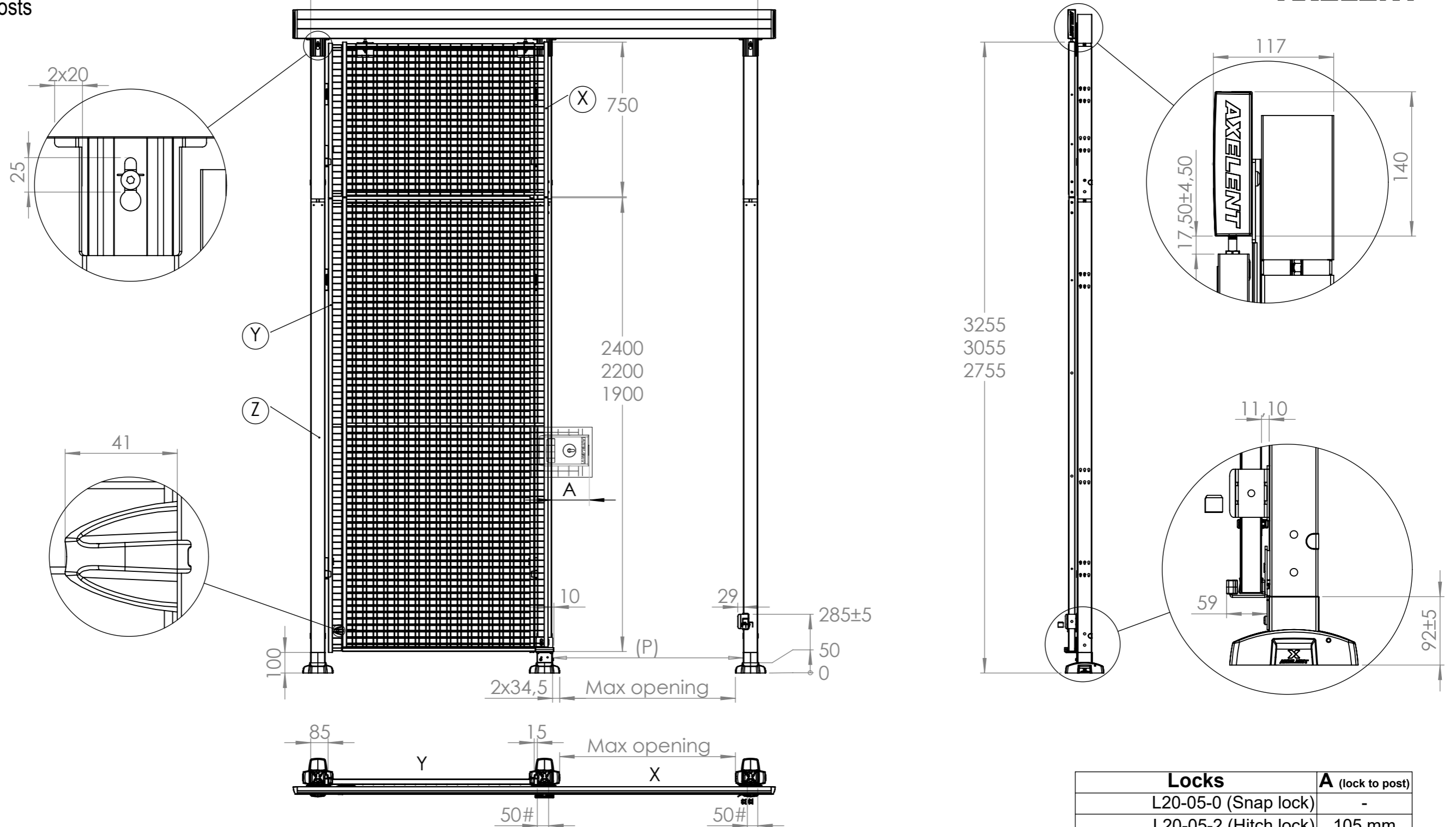
D40-XXX140B: 1100 - 1500 mm, 991 - 1391 mm

XXX= Height on posts



Total width of door (100B)=2200 mm (max)=X+Y+200

Total width of door (140B)=3200 mm (max)=X+Y+200



Max opening = X (panel width) - 109 mm (109 mm= (2x34,50) + 40 mm)
(P) Post to post opening = X (panel width) - 40 mm** (**= panel in closed position overlapping posts (40 mm= 20 + 20))
50# = Dimensions in door closed position
Max opening is affected by "A" mm with lock (without door accessories*)

Item No.	Art No.	Qty. (+x)=extension
X	322-XXXXXX	1 (+1)
Y	W322-XXXXXX	1 (+1)
Z	P13-XXX	3

Locks	A (lock to post)
L20-05-0 (Snap lock)	-
L20-05-2 (Hitch lock)	105 mm
XIT-L/R01-301 (Cylinder lock)	-
XIT-L/R14-301 (Slam shut)	215 mm
XIT-L/R09-301 (Electric)	-
L66-20/21-L/R (X-lock)	190 mm
B-135 (MGB)	-
B-136 (MGB Escape Release)	135 mm